



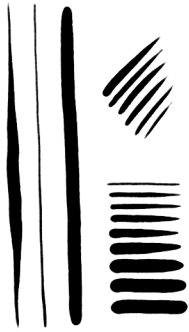
CUSTOM PHOTOSHOP BRUSHES
FOR ILLUSTRATION, DESIGN,
COMICS & DIGITALARTWORK.

•
The itsy bitsy spider climbed up the waterspout.

*Down came the rain
and washed the spider out.*

*Out came the sun
and dried up all the rain
and the itsy bitsy spider climbed up the spout again.*

•



{ ITSY BITSY SPIDER }

A versatile comic-style inking brush. Slight variations in the pen pressure can result in vastly different strokes, not unlike Japanese sumi brushes or flexible nib pens. Perfect for clean linework, and etched shading.



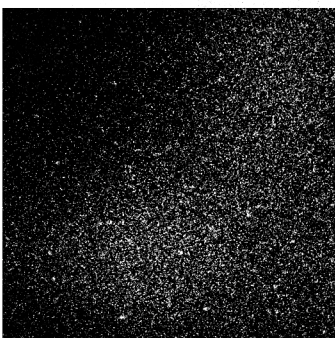
{ UP THE WATERSPOUT }

A raw inking brush, with a bit of grit and bleed when using heavy pressure. Can be used as a normal inking brush for a nice, organic, and vintage style look, or for grungy borders. Best used at slightly larger sizes so that the texture is a bit more apparent.



{ DOWN CAME THE RAIN }

A randomised grit brush. Made for textured shading, adding character to your work, or simulating scattered ink splatters. Has slight varying pressure control for ease of use.



{ WASH THAT SUCKER OUT }

A subtle noise brush, made of small ink speckles. Use as a mask to add a bit of a wash out look to certain areas of the work. Best used in moderation, to create an uneven, scattered worn texture.

{ TOOL PRESETS }

Photoshop 'Tools' are similar to Photoshop 'Brushes', but add a few extra options.

**Note: Tool presets will only work with Photoshop CS5 and up.*

{ HOW TO INSTALL }

With Photoshop open, click on the 'Window' tab at the top of the screen.

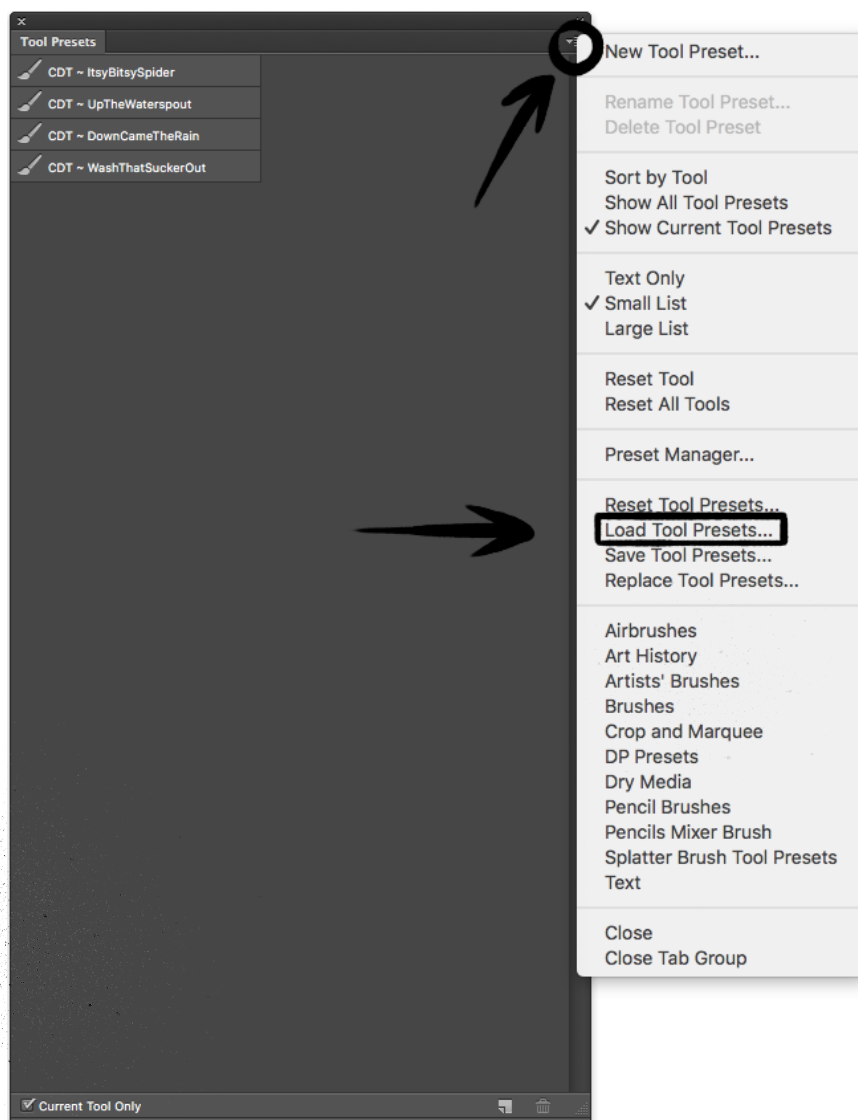
From the drop-down menu, select 'Tool Presets'.

With the Tool Presets dialog box open, navigate to the options, by clicking the small menu icon and then select 'Load Tool Presets'.

Find the file named '**Christi du Toit - Itsy Bitsy Inkerz.tpl**', open it, and you're all set.

To use, pick one of the brushes in the list, and draw with your normal brush tool.

**Note: Best used with pressure sensitive drawing tablets.*



CUSTOM BRUSHES & ILLUSTRATIONS BY:

CHRISTI*DU*TOIT

www.christidutoit.co.za

 [instagram.com/christidutoit](https://www.instagram.com/christidutoit)

 [behance.net/christidutoit](https://www.behance.net/christidutoit)

 [facebook.com/christiart](https://www.facebook.com/christiart)

 [dribbble.com/christidutoit](https://www.dribbble.com/christidutoit)

 christidutoit.tumblr.com

